



# SERIES MGA TWIN CAM

# SERVICE PARTS LIST

(SECOND EDITION)

This List cancels First Edition of Part No. AKD599A and embodies all information issued up to and including Parts List Amendment No. PMG/409

WHEN ORDERING FURTHER COPIES OF THIS LIST PART No. AKD1296 SHOULD BE QUOTED

Issued by

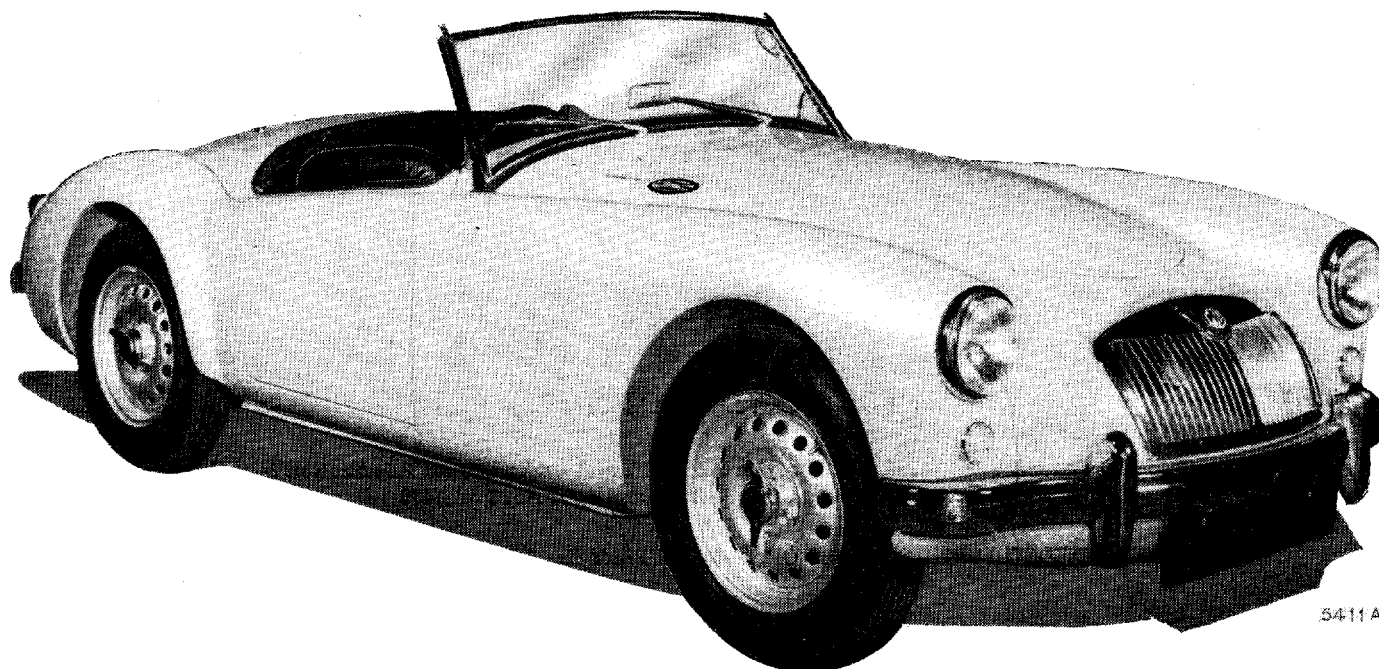
**B.M.C. SERVICE LIMITED**  
**COWLEY OXFORD ENGLAND**

Telephone - - - - - Oxford 77777  
Telex - - - - - Oxford Telex 83145 and 83146  
Telegrams - - - - - Mowog, Telex, Oxford

Cables - - - - - Mowog, Oxford, England  
Codes - - - - - Bentley's, Bentley's Second Phrase, A.B.C.  
(5th and 6th Editions), Western Union and Private

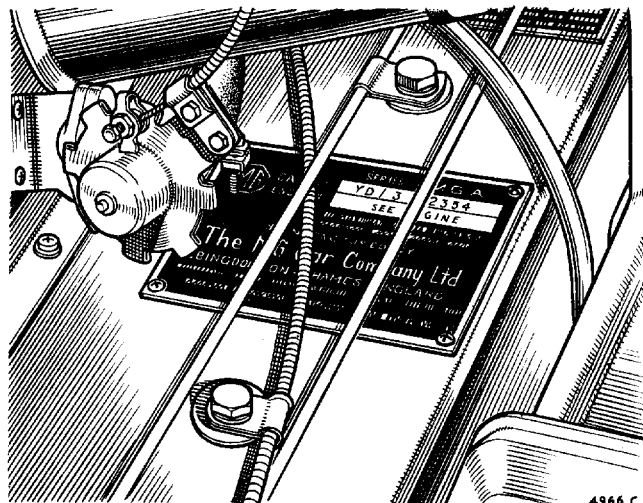


FEBRUARY 1960

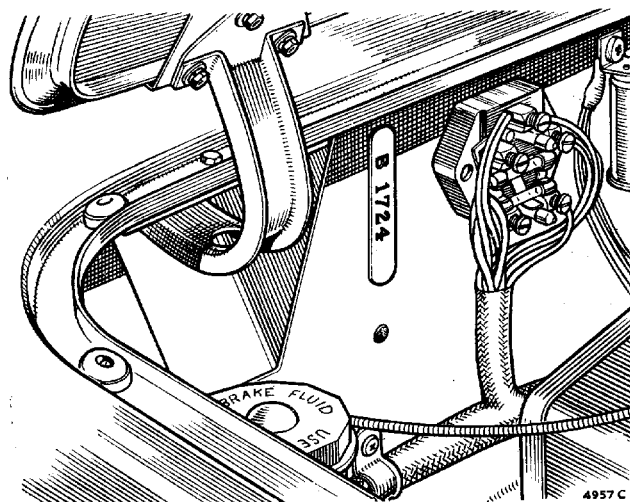


5411A

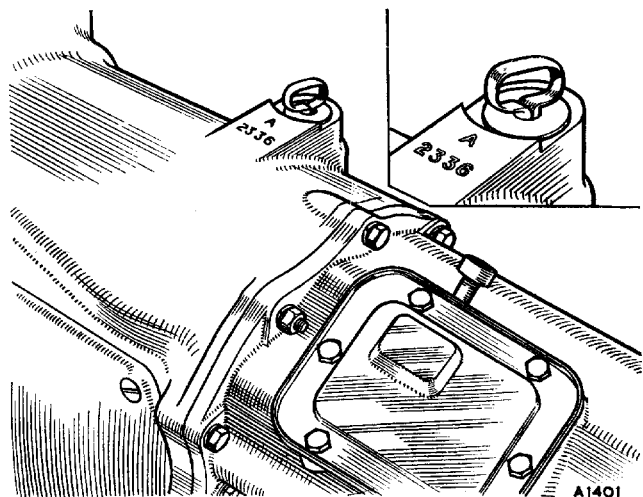
LOCATION OF SERIAL NUMBERS



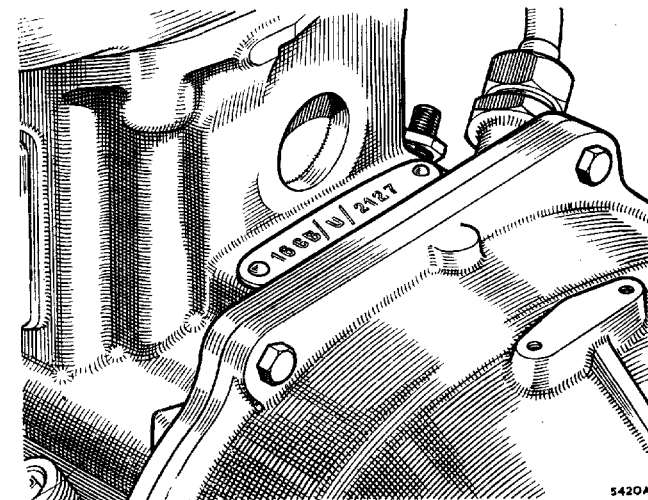
The **Car Number** is stamped on a plate secured to the top left-hand side of the dash panel



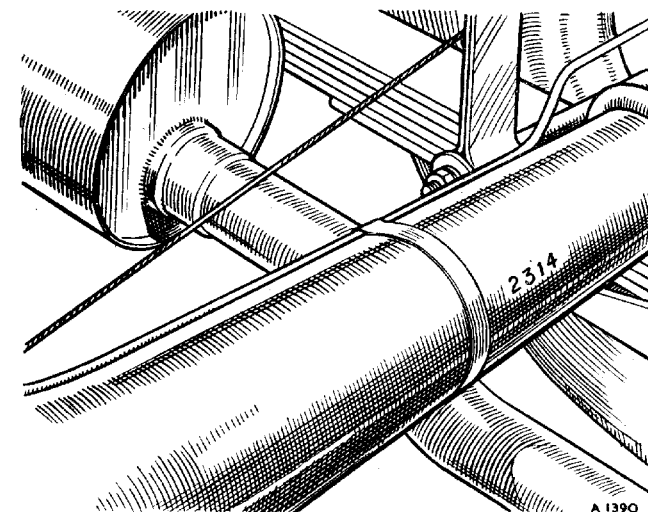
The **Body Number** is stamped on a plate secured to the bulkhead between the right-hand bonnet hinge and the fuse block



The **Gearbox Number** is stamped on the top of the gearbox casing adjacent to the dipstick



The **Engine Number** is stamped on a plate secured to the rear of the engine behind the cylinder block



The **Rear Axle Number** is stamped on the front of the axle tube on the left-hand side adjacent to the spring seat

## Introduction

The range of parts in this List covers all serviceable components on all models to the standard specifications. Where the part is confined to one specification this is clearly defined in the 'Quantity' and or 'Remarks' column, and where the part listed is not serviced this is indicated by the letters N.S.P. in the 'Part Number' column.

The components in the plate illustrations are identified by numbers which correspond with the illustration reference appearing on the facing page in the column immediately following the part number.

It is essential first to identify the part against the illustration in the appropriate section of the List and make use of the illustration reference number to locate the part number and official description on the adjacent page.

When using the List it must be noted that each assembly (or sub-assembly) is shown as the **first item** and followed immediately by the individual components of the assembly, which are 'offset' for easy identification. It must be clearly understood that such assemblies (or sub-assemblies) will only be supplied complete with all their components when ordered against the assembly (or sub-assembly) part number. It will be appreciated, however, that the individual components of the assembly (which are listed immediately below and offset) can themselves be supplied separately, provided they are ordered against their individual part numbers. Note that the quantities shown are the quantity per vehicle, and not the quantity per component.

Example:

### CONNECTING RODS—BEARINGS

<b>Connecting rod and cap + 2 (Nos. 2 and 4 cylinders)</b> .....	<b>AJH5307</b>	<b>2</b>
<b>Connecting rod and cap + 2 (Nos. 1 and 3 cylinders)</b> .....	<b>AJH5313</b>	<b>2</b>
Bolt for cap .....	AEH485	8
Washer for bolt .....	6K881	4

We reserve the right to make changes or improvements in the construction or equipment of our products at any time. It is our general policy, however, to supply components to the latest specification.

Where a modification has taken place to a part, or a new part issued replacing the original part, this is indicated by the inclusion of the new part number under 'Modifications'.

## Owner's Guide for Ordering Parts

Obtain your parts from the local B.M.C. Distributor or Dealer, who stocks only B.M.C. genuine and warranted parts.

- (1) In order to ensure prompt and correct execution of orders it is essential that the following instructions are adhered to:
  - (a) Always state the **car and engine numbers** complete with prefixes and suffixes (see page iii).
  - (b) Always **state the colour** of carpets, painted items, trim items, etc.
  - (c) Give **part numbers and description** (prefix letters to part numbers must always be quoted).
  - (d) **Quantity required**, bearing in mind that the quantities shown are the quantity per vehicle.
  - (e) **If ordering for dispatch give definite forwarding instructions**, i.e. sea, air freight, air parcel service, post, passenger goods train, road service, or collection.
- (2) When cabling or telegraphing the local Distributor or Dealer use the part number and give the **car number**. **Confirm your cable or telegram by letter, or order**, at once. Give sufficient postal address for a parcel to find you. If you are away from home give **your home address in addition** to the dispatching instructions. Remember when sending a telegraphic order that **your name and address must be telegraphed as a message**. If this is not done the order will arrive without any indication of the sender's address, as your signature and address on the back of the telegram form is not telegraphed. Always write the quantity required of any particular part in words.
- (3) **Claims under Warranty**  
 Claims for the replacement of material or parts under Warranty must always be submitted to the supplying Distributor or Dealer, or, when this is not possible, to the nearest Distributor or Dealer, informing them of the vendor's name and address.
- (4) **Replacement Unit Schemes**  
 Where service replacement units are available this is clearly indicated by a bold letter (**R**) against the item at the end of the 'Description' line. Details of these and the terms and method of replacement are published in the local press and trade periodicals. You are advised to consult the local Distributor or Dealer for full details.

